
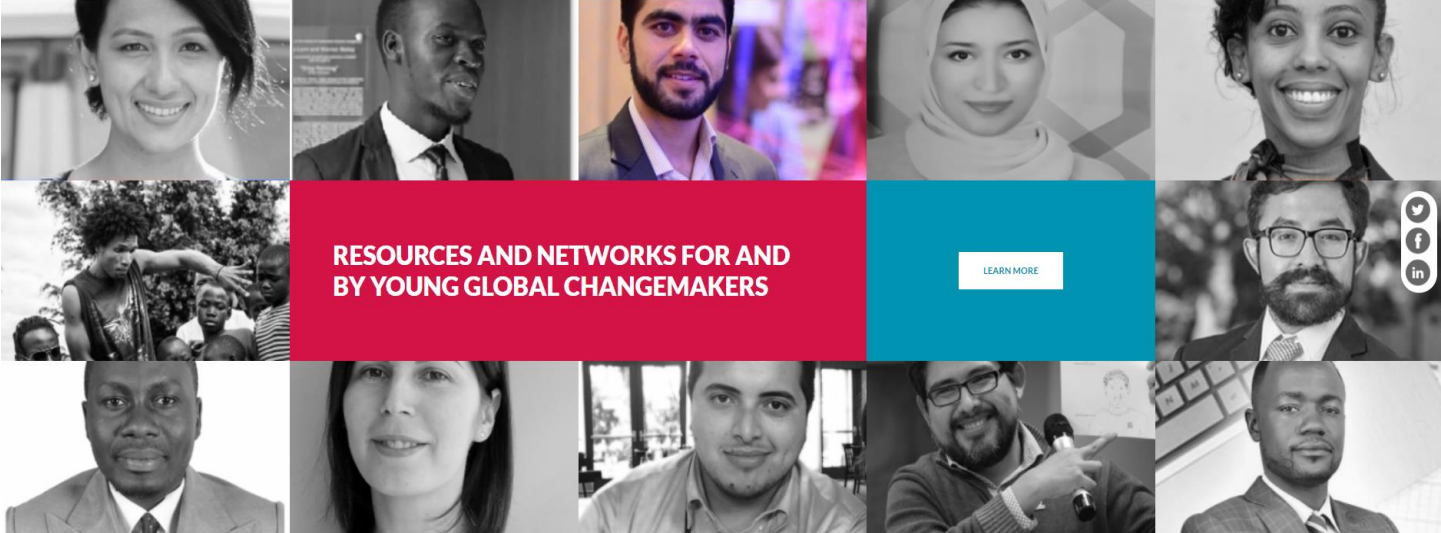


# YOUTHLEAD


[www.youthlead.org](http://www.youthlead.org)

**YOUTHLEAD** ABOUT MEMBERS PROJECTS FUNDING EVENTS DISCUSSIONS RESOURCES 



**RESOURCES AND NETWORKS FOR AND BY YOUNG GLOBAL CHANGEMAKERS**

[LEARN MORE](#)



YouthLeadGlobal



@YouthLeadGlobal



# Welcome and Introduction

@YouthLeadGlobal  
#YouthLeadGlobal  
#YLWebinar



**Maria Brindlmayer**  
YouthLead Coordinator



**Nilima Raut**  
Project Manager;  
Knowledge  
Management &  
Communications;  
Atlas Corps Fellow  
(Nepal)



**Abolaji Omitogun**  
Knowledge  
Management &  
Communications  
Atlas Corps Fellow  
(Nigeria)



**Ikena Anyadike**  
Knowledge  
Management &  
Communications  
Atlas Corps Fellow  
(Nigeria)

# YouthPower Learning

## Advancing solutions to improve young lives

- **YouthPower Learning** advances solutions through integrated research and development programs to improve the capacity of youth-led and youth-serving institutions.
- *By engaging youth, their families, communities, and governments in innovative programs, we build young people's skills, assets, and competencies; foster healthy relationships; strengthen the enabling environment; and transform systems.*

### What is Positive Youth Development (PYD)?

PYD programs recognize youth's inherent rights and result in youth who have **assets**, the ability to leverage those assets (**agency**), and the ability to **contribute** to positive change for themselves and their communities, surrounded by an **enabling environment** that supports them

<http://www.youthpower.org/positive-youth-development>

# YOUTHLEAD Vision



## YouthLead:

The global hub for young changemakers to maximize their impact through networking, mentoring, and accessing information.

# YouthLead Ambassadors selected



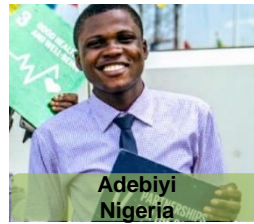
Alejandra  
Guatemala



Joseph  
Bangladesh



Shakira  
South Africa



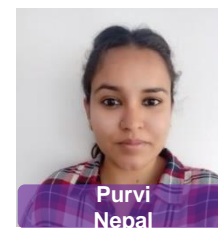
Adebisi  
Nigeria



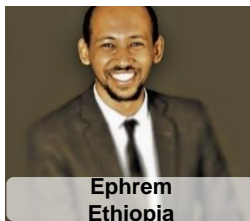
Deepank  
India



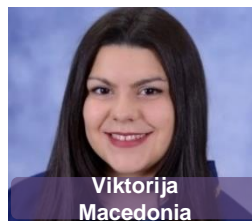
Jupille  
Haiti



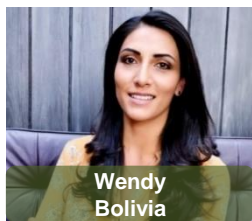
Purvi  
Nepal



Ephrem  
Ethiopia



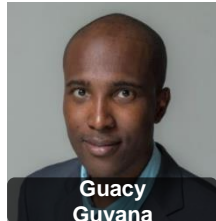
Viktorija  
Macedonia



Wendy  
Bolivia



Israel  
Chad



Guacy  
Guyana



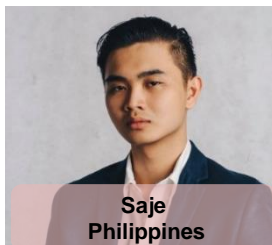
Rahama  
Mali



Natalia  
Peru



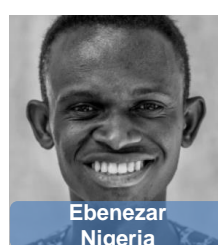
Danilsa  
Dominican Republic



Saje  
Philippines



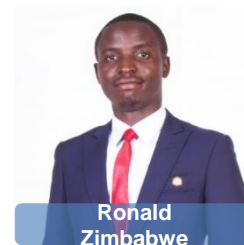
Abdulwahab  
Yemen



Ebenezar  
Nigeria



Aung  
Myanmar



Ronald  
Zimbabwe



Ilyas  
Pakistan

# 2019 YouthLead Activities

- Selection of YouthLead Ambassadors
- Campaigns
  - Photo contest (ongoing)
  - Video contest (forthcoming - to be confirmed)
- Webinar series and topical campaigns
  - Led by Ambassadors
  - Led by Sponsors, connected with campaigns





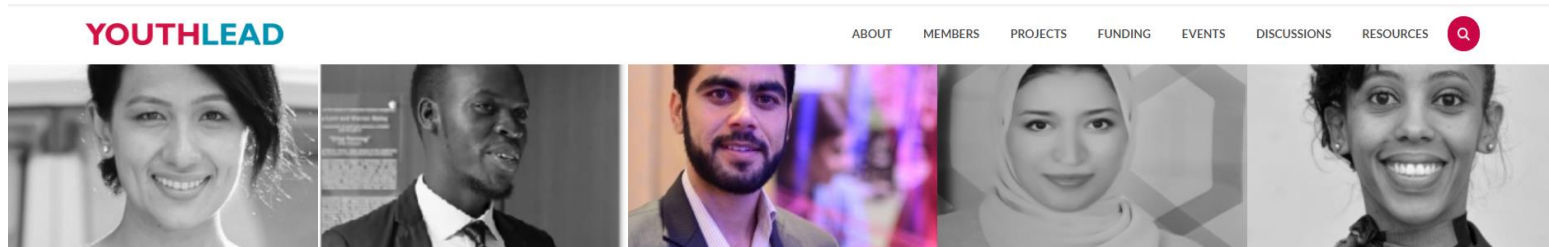
# Sponsors

Sponsors are promoting YouthLead, contributing content and are leading webinars for the mini-campaigns.

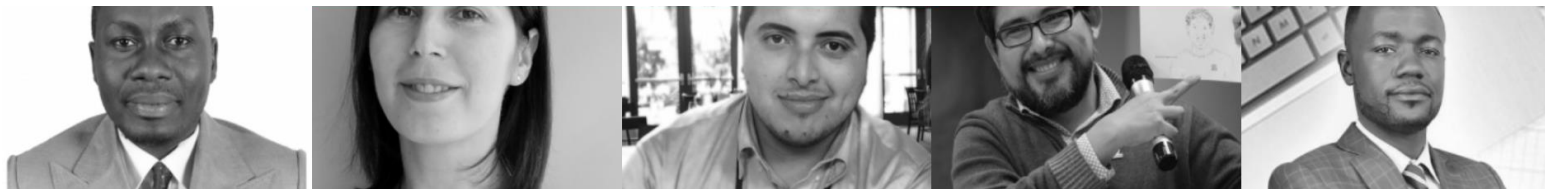


# YOUTHLEAD

[www.youthlead.org](http://www.youthlead.org)



## The Time is Now: Applying a mental health lens to youth-focused programming



YouthLeadGlobal



@YouthLeadGlobal







# **The Time is Now: Applying a mental health lens to youth-focused programming**

Chisina Kapungu & Marie-Louise Ocran

July 31<sup>st</sup>, 2019

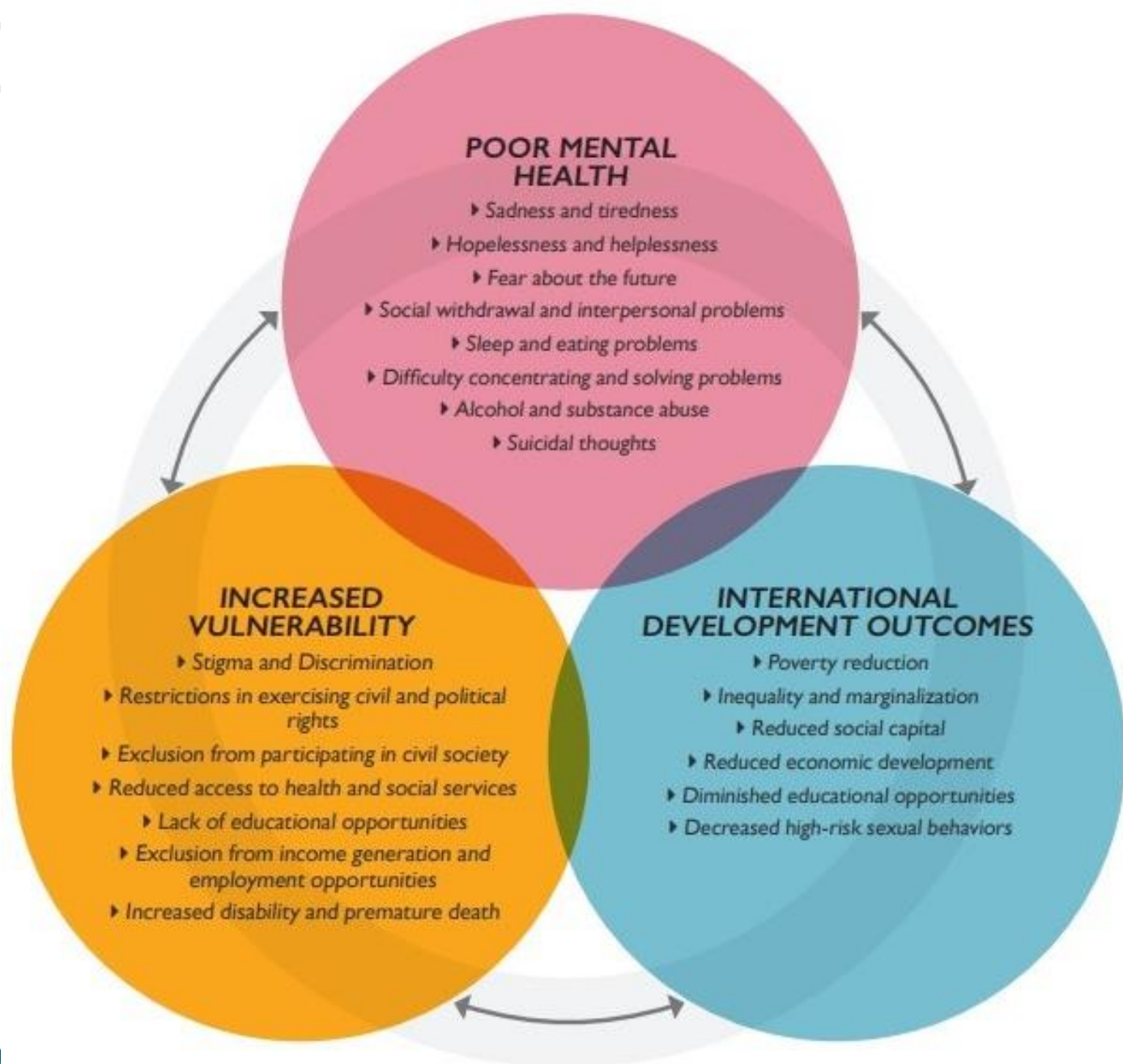
# Speakers



**Chisina Kapungu**  
Senior Gender &  
Youth Specialist  
ICRW



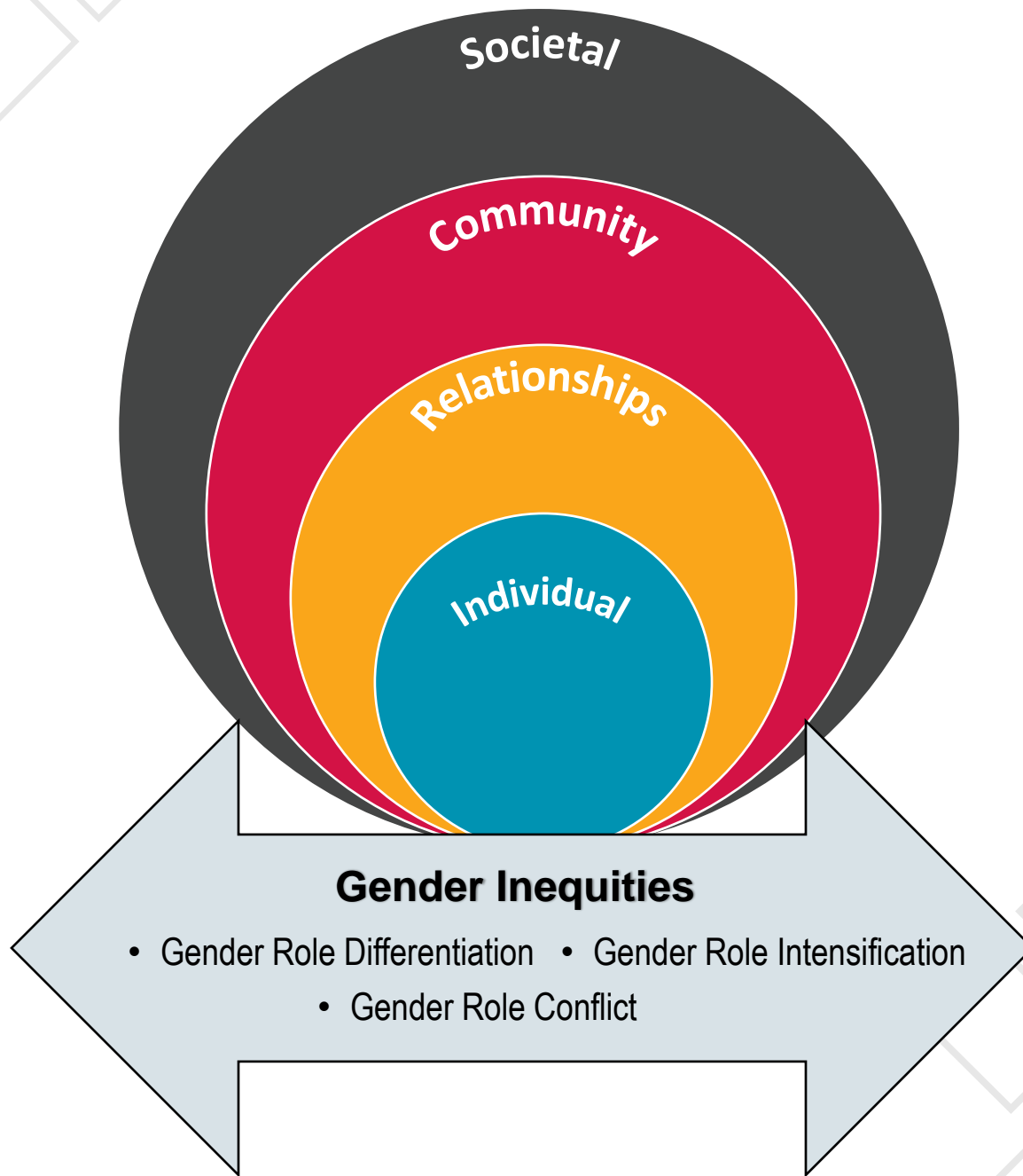
**Marie-Louise Ocran**  
Founder,  
More to Life International













# Deaths in 15-19 year olds

(1990, 2005, 2013)

## Male

Road injuries 17.5% (16.1-19.5)	Road injuries 19.6% (18.0-21.4)	Road injuries 18.7% (16.8-20.8)
Self-harm 7.3% (6.0-8.6)	Self-harm 7.9% (6.0-9.4)	Interpersonal violence 7.8% (5.3-9.3)
Drowning 7.2% (5.7-8.7)	Interpersonal violence 7.6% (5.3-9.3)	Self-harm 7.4% (5.7-9.4)
Interpersonal violence 6.8% (4.9-8.6)	Drowning 6.3% (5.2-7.9)	Drowning 5.9% (4.7-7.9)
Tuberculosis 4.6% (3.8-5.4)	Intestinal infectious diseases 3.2% (1.6-5.6)	HIV/AIDS 5.4% (4.6-6.2)

## Female

Self-harm 8.8% (7.5-10.1)	Self-harm 9.9% (7.5-12.9)	Self-harm 9.8% (7.1-12.9)
Tuberculosis 6.8% (5.7-8.2)	Road injuries 8.0% (6.8-9.0)	Road injuries 7.6% (6.3-8.8)
Road injuries 6.6% (5.9-7.8)	Tuberculosis 5.6% (4.2-6.7)	HIV/AIDS 7.5% (6.4-8.7)
Fire, heat, and hot substances 5.6% (4.1-7.6)	Diarrhoeal diseases 4.2% (3.3-5.4)	Tuberculosis 4.4% (3.3-5.6)
Diarrhoeal diseases 5.2% (4.3-6.3)	Fire, heat, and hot substances 4.0% (2.7-6.1)	Fire, heat, and hot substances 3.9% (2.5-6.1)

# Global School-based Student Health

- In Iraq, Ghana and El Salvador:
  - **Girls were between two and six times more likely than boys ever to make a suicide plan**
- In El Salvador, Iraq, the Maldives and Swaziland:
  - **Girls were at least three times more likely to feel lonely if they were bullied based on their appearance**
- In five of the six countries:
  - **Girls experienced greater loneliness as a result of bullying due to sexual jokes, gestures and comments**
- In El Salvador, Iraq and Swaziland:
  - **For boys, bullying about appearance increased their likelihood of losing sleep**



# More to Life International

Free Your Mind

[MORETOLIFEORG.COM](http://MORETOLIFEORG.COM)



## **MISSION**

**Creating avenues for the positive mental health development of boys & girls .**

A group of people are sitting in a circle, engaged in a discussion. The image is overlaid with a semi-transparent blue filter. The text "VISION" is centered in the middle of the image.

## **VISION**

**Seeking to eradicate the stigma on  
mental health.**

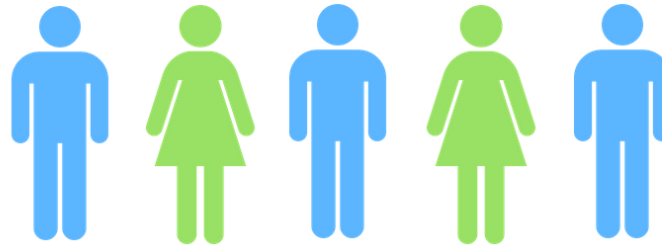
# 1 out of 5

---

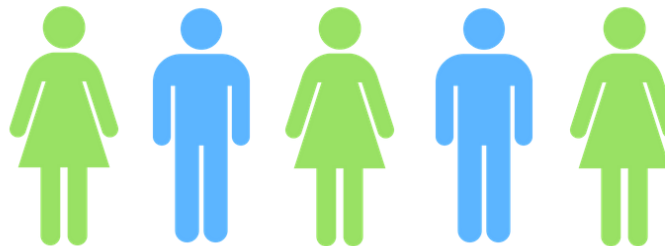


More to Life International  
Free Your Mind

youth aged 13–18 experiences  
a severe mental disorder at  
some point during their life.



adults experience mental  
illness in a given year.



Source: National Alliance On Mental Illness

---





## FOCUS

- MENTAL HEALTH EDUCATION
- SUICIDE PREVENTION
- ANTI BULLYING
- THERAPY PROMOTION
- SELF ESTEEMBOOSTING



## OPERATIONS

- WORKSHOPS
- SOCIAL MEDIA  
ADVOCACY



“I have never been remotely ashamed of having been depressed. Never. What’s there to be ashamed of? I went through a really tough time and I am quite proud that I got out of that.”

J.K. ROWLING



“I found that, with depression, one of the most important things you could realize is that you are not alone.”



BULLYING AFFECTS

MENTAL  
HEALTH

W.MORETOLIFEORG.COM



MENTAL  
HEALTH  
EDUCATION  
WILL HELP  
STUDENTS TO  
THRIVE.

1 IN 5



MORE THAN 90% OF CHILDREN  
WHO DIE BY SUICIDE HAVE A  
MENTAL HEALTH CONDITION.

NATIONAL ALLIANCE ON MENTAL ILLNESS (NAMI)

@MORETOLIFEINTL



WHEN WE FAIL TO EDUCATE YOUNG  
WOMEN ABOUT MENTAL HEALTH

WE FAIL AN ENTIRE  
GENERATION.

#DAYOFTHEGIRL

# 300

and counting..

- AGES 12-22YRS

## WORKSHOPS

- ACCRA, GHANA
- BUFFALO, NY
- ALBANY, NY
- BRONX, NY

UPCOMING PROJECT

## **LIFE CENTERS**

**Creating a safe environment for boys & girls to develop a healthier emotional and psychological lifestyle.**

# Opportunities for Action

- Create a nurturing and supportive environment through girls and boys clubs and “safe spaces”
- Use social media to increase education, promote discussion and reduce stigma on mental health
  - Develop a blog, video diary or write an article
  - Share resources and referrals of organizations that can help
- Integrate awareness-raising and educational campaigns within school-wide programming on mental health risks
- Implement peer to peer education on mental health
- Develop & implement gender-responsive mental health interventions
- Tailor adolescent programming for vulnerable populations



# Opportunities for Action

- Integrate gender and mental health into school curriculums and existing youth-focused interventions
- Integrate evidence-based positive youth development and social emotional learning strategies to strengthen children's life skills and value
- Adapt materials and curricula to include gender and mental health. Document what works and what doesn't work well.
- Engage youth in in program design, implementation and evaluation
- Integrate youth experiences and their voice in interventions and trainings for healthcare workers, teachers, school counselors and other frontline professionals

## Q&A

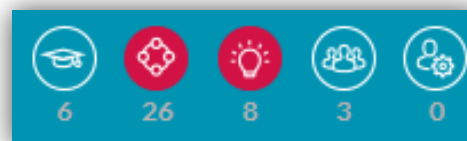


# How You Can Join and Contribute?

- Request to **join** at Youthlead.org
- Complete your **profile**
- Post **projects**
- Contribute to **discussions**
- Contribute and earn **badges** to increase visibility!
- Subscribe to monthly YouthLead **newsletter** for updates!
- Join and share on **social media**:

Contribute to the Twitter stream  
and spread the message of #YouthLeadGlobal and #YLWebinar.  
Like and follow YouthLead on Facebook.

- Reach out to the speakers – and **continue the discussion** about this topic in the YouthLead discussion group. <https://www.youthlead.org/discussions/webinar-social-entrepreneurship-submit-questions-you-want-our-youthlead-ambassadors-address>



YL [www.YouthLead.org](http://www.YouthLead.org)

 [@youthleadglobal](https://twitter.com/youthleadglobal)

 YouthLeadGlobal

# Thank you!

Thank you for participating in this YouthLead webinar.  
The recording of today's event will be shared with all registrants.

Please visit [www.YouthLead.org](http://www.YouthLead.org) for more information.

#YouthLeadGlobal  
#YLWebinar



YouthLeadGlobal



@YouthLeadGlobal



## ICRW RESOURCES

### PUBLICATIONS

- *Understanding and Tackling Gendered Drivers of Poor Adolescent Mental Health* - <https://www.icrw.org/publications/understanding-tackling-gendered-drivers-poor-adolescent-mental-health/>
- *A Life Not Chosen: Early Marriage and Mental Health* - <https://www.icrw.org/publications/a-life-not-chosen-early-marriage-and-mental-health/>
- *Mental Health and Ending Female Genital Mutilation and Cutting: Recommendations for U.S. Foreign Policy and Programs* - <https://www.icrw.org/publications/mental-health-ending-fgmc-recommendations/>

### BLOGS

- *Self-Harm: A Leading Cause of Death for Girls, and We Don't Know Why* via NewsDeeply - <https://www.newsdeeply.com/womenandgirls/community/2017/10/04/self-harm-a-leading-cause-of-death-for-girls-and-we-dont-know-why>
- *Bullying needs to be addressed at every level of our communities. Here's how.* via Devex - <https://www.devex.com/news/opinion-bullying-needs-to-be-addressed-at-every-level-of-our-communities-here-s-how-93600>

### WEBINAR

- *Navigating the Intersection between Gender & Adolescent Mental Health* - <https://youtu.be/gPu3VpLvRg>.

# YOUTHPower LEARNING RESOURCES

## PUBLICATIONS

- *Systematic Review of Positive Youth Development in Low- and Middle-Income Countries-* <https://www.youthpower.org/systematic-review-pyd-lmics>
- *A Conceptual Framework on the Gendered Drivers of Poor Mental Health-* <https://www.youthpower.org/resources/socio-ecological-approach-understanding-gendered-drivers-poor-adolescent-mental-health-low-and-middle-income-countries>
- *The Gendered Impacts of Bullying on Mental Health in Low-and Middle-Income Countries: Recommendations for Programs and Research-* <https://www.youthpower.org/resources/gendered-impacts-bullying-mental-health-among-adolescents-low-and-middle-income-countries-recommendations-programming-and-research>
- *Gender and Adolescent Mental Health: An Opportunity to Achieve Sustainable Development-* [https://www.youthpower.org/sites/default/files/YouthPower/files/resources/USAIDYouthPower\\_MentalHealth\\_v5\\_WebReady.pdf](https://www.youthpower.org/sites/default/files/YouthPower/files/resources/USAIDYouthPower_MentalHealth_v5_WebReady.pdf)